

COLONIAL[®] GAS WATER SERIES CGWA-Series III

Designed for residential and small commercial applications with approved chimney.

INTEGRATED BOILER CONTROL

Temperature control, relay, and ignition functions in a single module. Includes additional circulator output for a second heating zone or an indirect water heater

- ★ Cast iron heat exchanger
- ★ Boiler easily field convertible to left side piping
- ★ Built-in rear draft diverter to fit low spaces
- ★ Controls located inside the jacket and easily accessible from front of boiler
- ★ Eight sizes from 38 to 280 MBH

Limited Lifetime Warranty



NATIONAL

PROUDLY MADE IN THE USA



COLONIAL[®] GAS WATER SERIES CGWA-SERIES III

TECHNICAL SPECIFICATIONS

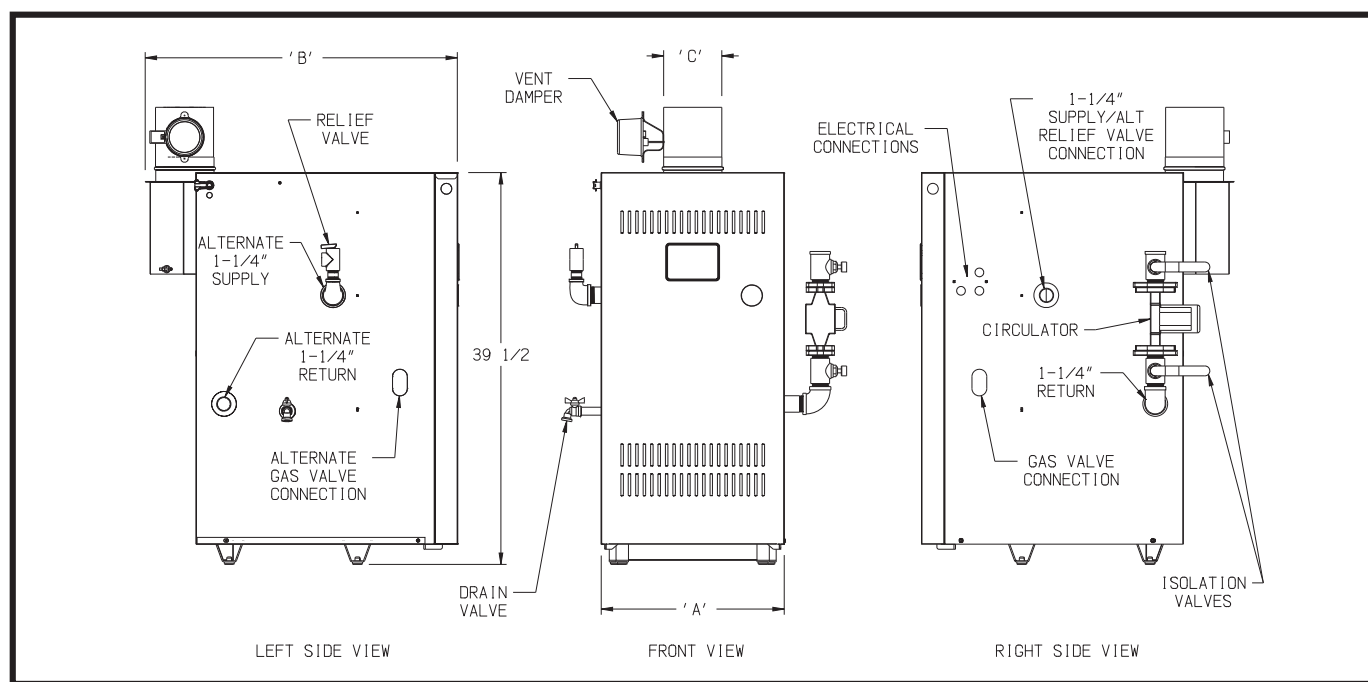
CGWA SPACE HEATING RATINGS NATURAL AND LP GAS					NO. OF SECTIONS	DIMENSIONS (IN.)			SHIPPING WEIGHT (LBS.)
NATIONAL MODEL NUMBER	INPUT (MBH)	HEATING CAPACITY (MBH)	AHRI NET RATING WATER (MBH)	AFUE (%)		'A'	'B'	'C'	
CGWA-38-S3	38	32	28	84.0	2	9-3/4	31-1/2	4	234
CGWA-70-S3	70	59	51	84.0	3	12-7/8	31-1/2	4	284
CGWA-105-S3	105	88	77	84.0	4	15-3/8	31-1/2	5	334
CGWA-140-S3	140	117	102	84.0	5	18-1/2	31-1/2	6	384
CGWA-175-S3	175	146	127	84.0	6	21-1/2	31-3/4	7	434
CGWA-210-S3	210	176	153	84.0	7	24-5/8	33-1/2	7	484
CGWA-245-S3	245	205	178	84.0	8	27-5/8	33-1/2	8	533
CGWA-280-S3	280	234	203	84.0	9	30-3/4	33-1/2	8	583

- Altitudes above 2,000 ft. - ratings should be reduced at a rate of 4% for each 1,000 ft. above sea level (US only) CGWA-38-S3 not suitable for use above 2,000 ft.
- The AHRI Net Water Ratings are based on a piping and pickup allowance of 1.15.
- The manufacturer should be consulted before selecting a boiler for installations having unusual piping and pickup requirements, such as intermittent system operation, extensive piping systems, etc.

All residential cast iron boilers include a full one year warranty. A limited, lifetime warranty is provided for the cast iron heat exchanger.

Additional Features/Benefits

- Available with natural or LP gas
- Designed for installation on combustible floors
- Stack Damper; Rollout Switch; Blocked Vent Switch; ASME relief valve (30 PSI)
- Stainless steel burners
- Includes 24V low water cutoff
- Includes two 1-1/4" isolation valves



Specifications are subject to change without notice.

